

Safety

Design of the SINOLIFT CQD-E series Electric Reach Stacker is not only good to look at, but also good for protection of the operator. The low skirt ensures that the wheels remain safely within the truck contours. Together with the rounded, smooth shape of the chassis and tiller head, this reduces all risk of injury or damage.

Powerful

The trucks show their true strength in efficiency on the job. Powerful 1.6kW AC motor, control for authentic proportional lifting and lowering, load capacity up to 1.500kg and efficient brakes add up to productivity in service at any duty level.

Comfort

Everything the SINOLIFT CQD-E is meant to do it does easily. And does most of it faster. All controls can be operated with either hand without ever having to let go of the tiller. The handles are made of corrosion-resisting material that is pleasant to the touch.

Reliability

Rugged construction makes this a truck to rely on. The sturdy mast and the frame of high-grade pressed steel contribute to considerably longer truck lifetime as well as fast, easy and safe load handling.

Serviceability

Self-Diagnostics provided through the digital display allows easy trouble-shooting with the use of an external hand-held analyzer. Swift access to all components and maintenance-free AC-technology play an additional part in keeping truck uptime up.

Standard equipment

- Multifunction back lighted display
- Key switch or Log in Pin code: ignition
- Dedicated work station (with storage compartments)
- Power assisted steering with a proportional steering resistance
- Positive steering (drive wheel) feedback
- Automatic speed reduction when cornering
- AC motor and Progressive speed AC control system.
- Automatic braking
- Electromagnetic emergency brake acting proportionally to the load weight
- Folding stand-on platform
- Hour meter

Optional equipment

- Other mast types and lift heights
- Soft landing of forks
- Ultra fast lifting
- Support for data terminal or barcode reader (Pack N°2)
- Cold store protection -35°C
- Mast protections (polycarbonate or mesh)
- Ideal 45° driving position (SP)
- Safe operator compartment with surrounding shields
- Cushioned full-suspension platform
- Battery capacity/discharge indicator
- Swing out battery tray.
- Electric horn
- Buck-up buzzer wiring
- Non-slip sheet
- Battery hood damper
- Load restrainer.
- Other Tiller
- Flashing light and beeper
- 50A Built-in restrainer
- Other options available on request.



SINOLIFT
For material handling

CQD-E Series

Heavy Duty Electric Reach Stacker
ISO9001
CE



- **Rated capacity: 1000kg/1500kg**
- **Advanced ergonomics for maximum safety**
- **Idea for short shuttle distances and low-speed handling**
- **Rugged construction, compact body and precise control**
- **Electric power steering (EPS): extremely light and energy saving**



SINOLIFT MATERIAL HANDLING EQUIPMENT CORP.

ADD: 2477 Dachuan Road, Nanhui Industry Park, Shanghai, China 201300

TEL: +86 21 68014500 / +86 21 58003681

FAX: +86 21 68014262 / +86 21 68038190

EMAIL: info@sinolift.com

WEB: www.sinolift.com www.sinoliftforklift.com





CQD-E Series Heavy Duty Electric Reach Stacker.

The CQD-E Series Reach Truck is available for applications where pallet widths vary in size and exceed the existing straddle width setting , or where bottom rach stringers do not exist. The 500mm heavy duty reach mechanism that include forward/backward tilt forks, features internal hosing that replaces conventional, high maintenance, externally mounted hose reels, Tilt forks make load handling easier and the reach actions is cushioned for steady and controlled load extension and retraction.

Features

- Robust construction, rounded contours with no sharp edges.
- Idea driving position with panoramic visibility, secure and stable stand.
- Operator safety ensured by low skirt and design on tiller head.
- Electric power steering (EPS), effortless and exact.
- Integral side guards, fold up and down at one easy motion (OPTIONS)



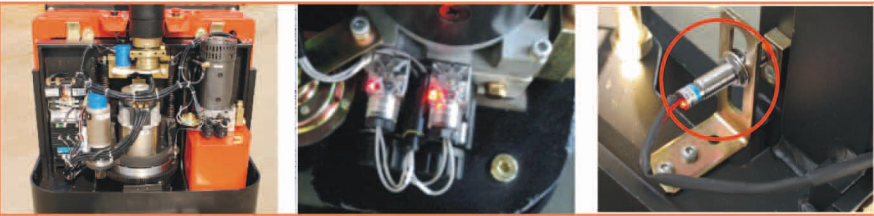
Tiller arm controls

- All controls on tiller can be operated with either hand and greatly reduce operator fatigue even during long shifts.
- The handles are made of corrosion-resisting material that is pleasant to the touch.
- The polyethylene covers manufactured with rotational molding technology are very strong and flexible, and can withstand hard bumps without buckling.



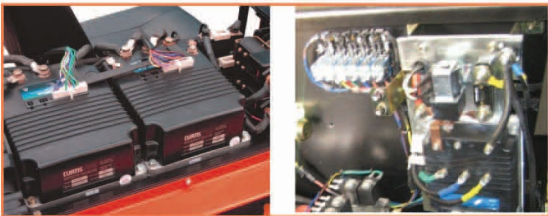
Mast and frame

- Masts with a rated capacity of 1,000kg and 1500kg. Cold drawn sections have high surface strength and permit high capacities.
- Simplex, Duplex and Triplex mast with ample visibility and lifting heights up to 5000mm are available.
- The mast can be delivered upon request with low free lift or high free lift of the forks.
- ITA Class II hook type mounting carriage and heavy-duty I.T.A alloy forks can help easier loading and unloading.



Drive unit / Transmission

- Maintenance-free AC technology plan and additional part in keeping truck uptime up.
- Advanced regenerative braking guarantee low energy consumption, increasing the efficiency.
- Drive axle mounted on precision tapered roller bearings.
- Two magnetic valves quote three kinds of descend speed.
- Proximity switch ensure safety and energy-saving.



Electric system

- The new electronic system ensure low energy consumption and quiet operations.
- The electrical system and wiring are protected to IP54 and are waterproof and dustproof, ensuring greater reliability over time.
- The control system protects the motor and battery from early wear by preventing high power spikes.
- The battery compartment is fully lined with sheet metal and can accommodate DIN and BS Batteries. Standard battery removal is from the side.

Mast Options

Mast Model	Max. Lifting height (mm)	Mast lowered height (mm)	Mast extended height (mm)
	h3	h1	h4
M16	1600	1790	2040
M25	2500	2040	3090
M30	3000	2190	3590
M33	3300	2340	3890
FFM45	4500	2040	5090

Notice: Care must be exercised when handling elevated load. When the carriage and/or load is elevated, truck stability is reduced. Operators must be trained and adhere to the instructions contained in the Operating Manual.

■ CQD-E Series 1.0T/1.5T Electric Reach Stacker Specficiations

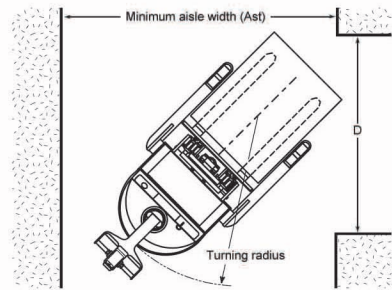
Characterics		Model			CQD10E	CQD15E
		Vehicle Type			Electric Reach Stacker	
		Type of drive			Accumulator	
	Q	Rated capacity		kg	1000	1500
	c	Load center		mm	500	500
		Operator type			Rider	Rider
	Y	Wheelbase		mm	1280	1380
	C1	Reach length		mm	500	
Wheels		Overall weight		kg	1636	1836
		Wheel material			PU	PU
		Size of front wheel		mm	210	210
		Size of drive wheel		mm	230	230
		Size of balance wheels		mm	124	124
		Wheel quantity			2* front wheel + 1* drive wheel + 1* balance wheel	
	b10	Track width,front		mm	900	900
	b11	Track width,rear		mm	608	608
Dimensions	h1	Lowered mast height		mm	1790	1790
	h3	Lifting height		mm	70~1600	70~1600
	h4	Raised mast height		mm	2040	2040
	L1	Overall length		mm	2300	2300
	L	Fork length		mm	1070	1070
	b1/b2	Overall width		mm	850/908	850/908
	b5	Outer width of the fork		mm	200~680	200~680
	b6	Min. height of fork		mm	70	70
	b7	Clearance		mm	40	40
	b8	Height of frame		mm	840	840
Wa	Turning radius		mm	1650	1750	
Performance		Travel speed	laden	km/h	5.3	5.3
			unladen	km/h	6	6
		Lift speed	laden	mm/s	75	75
			unladen	mm/s	105	105
		Lowering speed	laden	mm/s	145	145
			unladen	mm/s	80	80
		Gradeability	laden	%	8%	8%
			unladen	%	10%	10%
Motor		Drive motor power		kw	1.6	1.6
		Lift motor power		kw	2.2	2.2
		Battery voltage/rated		V/Ah	24/210	24/210
		Battery capacity				
		Battery weight		kg	210	210
	Battery dimensions（L×W×H）		mm	650x200x540		

Remark:
1. The above specifications is set based the lifting height 2-stage mast: 1.6m, Special lifting height available.(2-Stage mast:2.5m,2.7m,3.0m,3.3m,3.6m,4m. 3-stage mast:4.3m,4.5m,4.8m,5m,5.5m,6m).
2. Attachment available.
3. Full free lift (FFM) is available.
4. The specification in the table are for standard models only, specification are subject to change without notice. For further information ,please contact us.

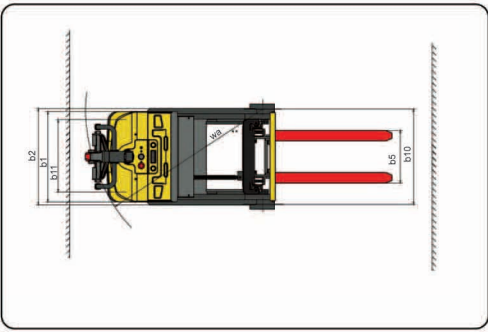
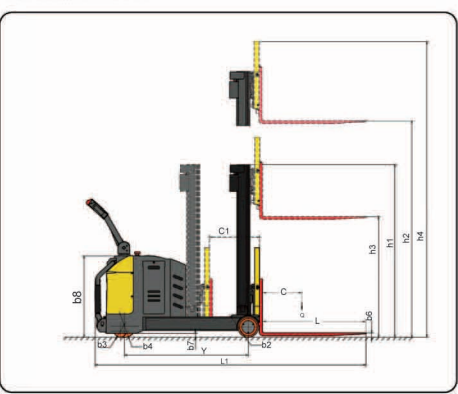
RIGHT ANGLE STACKING Minimum Aisle Width

Model	Pallet length mm	Pallet width mm	Distance(D) mm	Min Aisle Width(Asf) mm
CQD10E	1200	1000	1270	2286
CQD15E	1200	1000	1270	2362

* For each of operation, an extra 200mm should be added to the "Asf" Aisle dimension above.



Truck dimensions



Note: Specifications are effected by the condition of the vehicle and how it is equipped, as well as the nature and condition of the operating area. If these specifications are critical, the proposed application should be discussed with your dealer.